

GLASS VARIATIONS

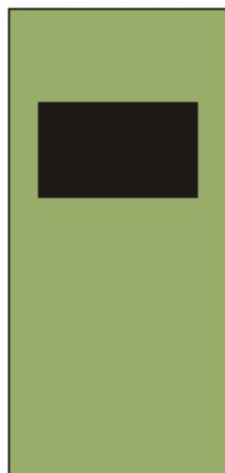
Option 1



Crystal mirror 6 mm
max. dimensions: 2400 x 1400 mm

Standard type:
square, f-edge polished
1x partial mirror for display acc. to placement demand

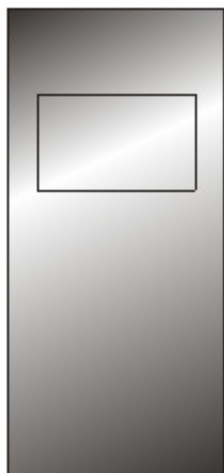
Option 2



Coloured Glass 6 mm
max. dimensions: 2400 x 1400 mm

Standard type:
square, f-edge polished
1x display area acc. to placement demand
backside printed monochrome acc. to RAL scale as requested.

Option 3



Magic Mirror 4 mm
max. dimensions: 1990 x 990 mm

Standard type:
TV when switched on/ mirror when turned off
square, f-edge polished
1x display area acc. to placement demand

Option 4



Printed Glass 6 mm
max. dimensions: 2400 x 1400 mm

Standard type:
square, f-edge polished
1x display area acc. to placement demand

Backside 4c printed acc. to template

Option 5



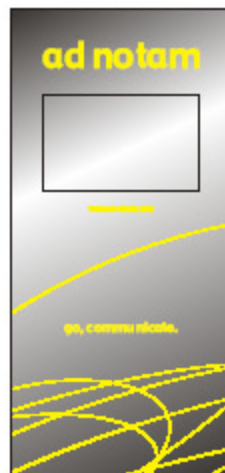
Design glass „Crystal Mirror“ 6 mm
max. dimensions: 2400 x 1400 mm

Standard type:
square, f-edge polished
1x partial mirror for display acc. to placement demand

Design implementation:
combined partial mirror acc. to template and monochrome printed backside acc. to RAL scale.

Figure above: example.

Option 6



Design glass "Magic Mirror" 4 mm
max. dimensions: 1990 x 990 mm

Standard type:
TV when switched on/ mirror when turned off
square, f-edge polished
1x display area acc. to placement demand

Design implementation:
combined partial mirror acc. to template and monochrome printed backside acc. to RAL scale.

Figure above: example.